

Anti-CMTM6 antibody (131-180 C-Term) (STJ96673)

STJ96673

GENERAL INFORMATION

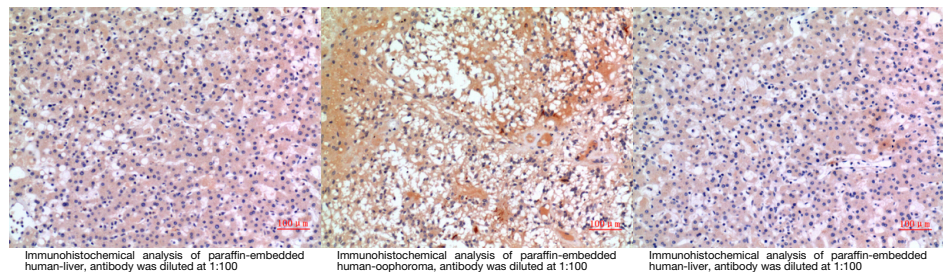
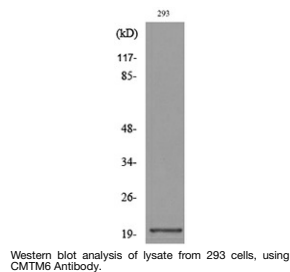
| | |
|--------------------------|--|
| Product Type | Primary antibodies |
| Short Description | Rabbit polyclonal antibody anti-Cklf-Like Marvel Transmembrane Domain-Containing Protein 6 (131-180 C-Term) is suitable for use in Western Blot, Immunohistochemistry, Immunofluorescence and ELISA research applications. |
| Applications | WB, IHC-P, IF-P, ELISA |
| Host/Source | Rabbit |
| Reactivity | Human, Rat, Mouse |

PRODUCT PROPERTIES

| | |
|----------------------------|--|
| Clonality | Polyclonal |
| Clone ID | |
| Concentration | 1 mg/mL |
| Conjugation | Unconjugated |
| Purification | The antibody was affinity-purified from rabbit anti-serum by affinity-chromatography. |
| Dilution | WB 1:500-1:2000 |
| Range | IHC 1:100-1:300 ELISA 1:20000 |
| Formulation | PBS, 50% Glycerol, 0.5% BSA and 0.02% Sodium Azide. |
| Isotype | IgG |
| Storage Instruction | Store at -20°C for up to 1 year from the date of receipt, and avoid repeat freeze-thaw cycles. |

TARGET INFORMATION

| | |
|---------------------------|--|
| Gene ID | 54918 |
| Gene Symbol | CMTM6 |
| Uniprot ID | CKLF6_HUMAN |
| Immunogen | The antiserum was produced against synthesized peptide derived from the C-terminal region of human CMTM6 at amino acid range 131-180 |
| Immunogen Region | 131-180 C-Term |
| Specificity | CMTM6 polyclonal antibody (Cklf-Like Marvel Transmembrane Domain-Containing Protein 6) binds to endogenous Cklf-Like Marvel Transmembrane Domain-Containing Protein 6 at the amino acid region 131-180 C-Term. |
| Immunogen Sequence | |



This product is suitable for in-vitro studies under the RESEARCH USE ONLY [RUO] licence. This product must not be used as for diagnostic or other medical purposes.
St John's Laboratory Ltd, Knowledge Dock Business Centre, University Way, London, E16 2RD | Tel: 0208 223 3081