

Anti-SPARC antibody (141-190 Internal) (STJ96886)

STJ96886

GENERAL INFORMATION

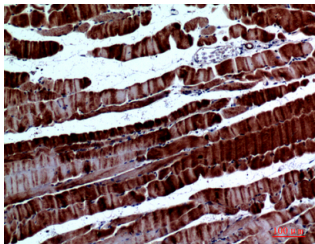
Product Type	Primary antibodies
Short Description	Rabbit polyclonal antibody anti-Sparc (141-190 Internal) is suitable for use in Western Blot, Immunohistochemistry, Immunofluorescence and ELISA research applications.
Applications	WB, IHC-P, IF-P, ELISA
Host/Source	Rabbit
Reactivity	Human, Mouse, Rat

PRODUCT PROPERTIES

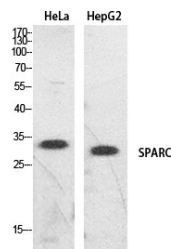
Clonality	Polyclonal
Clone ID	
Concentration	1 mg/mL
Conjugation	Unconjugated
Purification	The antibody was affinity-purified from rabbit anti-serum by affinity-chromatography.
Dilution Range	WB 1:500-1:2000 IHC 1:100-1:300 ELISA 1:20000
Formulation	PBS, 50% Glycerol, 0.5% BSA and 0.02% Sodium Azide.
Isotype	IgG
Storage Instruction	Store at -20°C for up to 1 year from the date of receipt, and avoid repeat freeze-thaw cycles.

TARGET INFORMATION

Gene ID	6678
Gene Symbol	SPARC
Uniprot ID	SPRC_HUMAN
Immunogen	The antiserum was produced against synthesized peptide derived from the Internal region of human SPARC at amino acid range 141-190
Immunogen Region	141-190 Internal
Specificity	SPARC polyclonal antibody (Sparc) binds to endogenous Sparc at the amino acid region 141-190 Internal.
Immunogen Sequence	



Immunohistochemical analysis of paraffin-embedded mouse muscle, antibody was diluted at 1:100



Western blot analysis of HeLa, HepG2 cells using SPARC Polyclonal Antibody. Secondary antibody was diluted at 1:20000