

Anti-Alpha-tubulin antibody [8F11] (STJ96937)

STJ96937

GENERAL INFORMATION

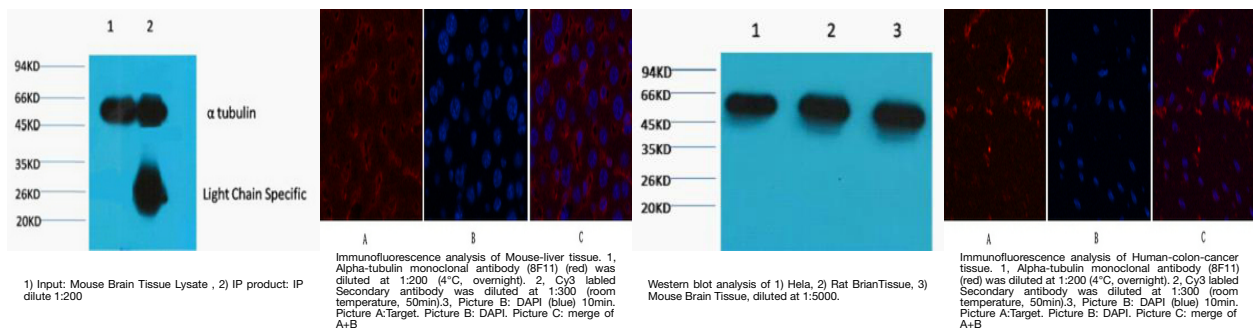
Product Type	Primary antibodies
Short Description	Mouse monoclonal antibody anti-Tubulin alpha-1A chain and Tubulin alpha-1B chain is suitable for use in Western Blot, Immunohistochemistry, Immunofluorescence, Immunocytochemistry and Immunoprecipitation research applications.
Applications	WB, IHC-P, IF, ICC, IP
Host/Source	Mouse
Reactivity	Human, Rat, Mouse

PRODUCT PROPERTIES

Clonality	Monoclonal
Clone ID	8F11
Concentration	
Conjugation	Unconjugated
Purification	The antibody was isolated from ascitic fluid by immunoaffinity chromatography using antigens coupled to agarose beads.
Dilution Range	WB 1:500-10000 IP 1:200 IF 1:200 IHC 1:50-300
Formulation	PBS, pH 7.4, 0.5% BSA, 0.02% Sodium Azide and 50% Glycerol.
Isotype	IgG1
Storage Instruction	Store at -20°C for up to 1 year from the date of receipt, and avoid repeat freeze-thaw cycles.

TARGET INFORMATION

Gene ID	7846 10376
Gene Symbol	TUBA1A TUBA1B
Uniprot ID	TBA1A_HUMAN TBA1B_HUMAN
Immunogen	Recombinant Protein of Tubulin alpha-1A chain
Immunogen Region	
Specificity	Alpha-tubulin monoclonal antibody (Tubulin alpha-1A chain and Tubulin alpha-1B chain) binds to endogenous Tubulin alpha-1A chain and Tubulin alpha-1B chain.
Immunogen Sequence	



This product is suitable for in-vitro studies under the RESEARCH USE ONLY [RUO] licence. This product must not be used as for diagnostic or other medical purposes.

St John's Laboratory Ltd, Knowledge Dock Business Centre, University Way, London, E16 2RD | Tel: 0208 223 3081