

## Anti-NOP56 antibody (191-240) (STJ98616)

STJ98616

### GENERAL INFORMATION

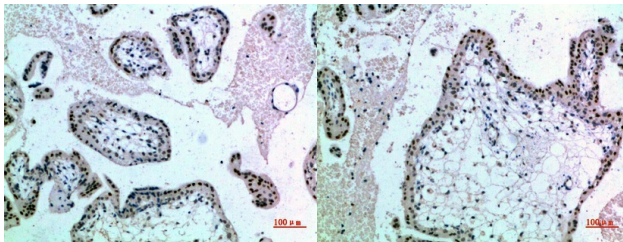
<b>Product Type</b>	Primary antibodies
<b>Short Description</b>	Rabbit polyclonal antibody anti-Nucleolar Protein 56 (191-240) is suitable for use in Western Blot, Immunohistochemistry, Immunofluorescence and ELISA research applications.
<b>Applications</b>	WB, IHC-P, IF-P, ELISA
<b>Host/Source</b>	Rabbit
<b>Reactivity</b>	Human, Mouse, Rat

### PRODUCT PROPERTIES

<b>Clonality</b>	Polyclonal
<b>Clone ID</b>	
<b>Concentration</b>	1 mg/mL
<b>Conjugation</b>	Unconjugated
<b>Purification</b>	The antibody was affinity-purified from rabbit anti-serum by affinity-chromatography.
<b>Dilution Range</b>	WB 1:500-1:2000 IHC 1:100-1:300 ELISA 1:10000
<b>Formulation</b>	PBS, 50% Glycerol, 0.5% BSA and 0.02% Sodium Azide.
<b>Isotype</b>	IgG
<b>Storage Instruction</b>	Store at -20°C for up to 1 year from the date of receipt, and avoid repeat freeze-thaw cycles.

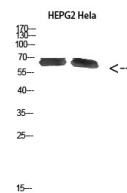
### TARGET INFORMATION

<b>Gene ID</b>	10528
<b>Gene Symbol</b>	NOP56
<b>Uniprot ID</b>	NOP56_HUMAN
<b>Immunogen</b>	Synthesized peptide derived from NOP56 at amino acid range: 191-240
<b>Immunogen Region</b>	191-240
<b>Specificity</b>	NOP56 polyclonal antibody (Nucleolar Protein 56) binds to endogenous Nucleolar Protein 56 at the amino acid region 191-240.
<b>Immunogen Sequence</b>	



Immunohistochemical analysis of paraffin-embedded human-placenta, antibody was diluted at 1:200

Immunohistochemical analysis of paraffin-embedded human-placenta, antibody was diluted at 1:200



Western blot analysis of HEPG2 HeLa cells using NOP56 Polyclonal Antibody diluted at 1:1000. Secondary antibody was diluted at 1:20000