

Anti-TTN antibody (161-210) (STJ98821)

STJ98821

GENERAL INFORMATION

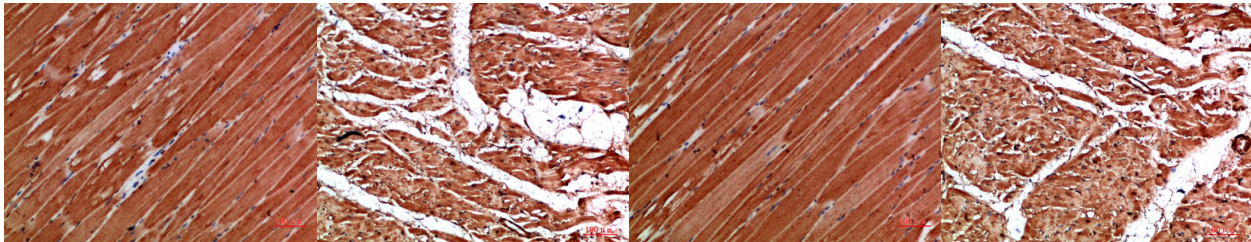
Product Type	Primary antibodies
Short Description	Rabbit polyclonal antibody anti-Titin (161-210) is suitable for use in Immunohistochemistry, Immunofluorescence and ELISA research applications.
Applications	IHC-P, IF-P, ELISA
Host/Source	Rabbit
Reactivity	Human, Mouse, Rat

PRODUCT PROPERTIES

Clonality	Polyclonal
Clone ID	
Concentration	1 mg/mL
Conjugation	Unconjugated
Purification	The antibody was affinity-purified from rabbit anti-serum by affinity-chromatography.
Dilution Range	IHC-P 1:50-200 ELISA 1:10000-20000
Formulation	PBS, 50% Glycerol, 0.5% BSA and 0.02% Sodium Azide.
Isotype	IgG
Storage Instruction	Store at -20°C for up to 1 year from the date of receipt, and avoid repeat freeze-thaw cycles.

TARGET INFORMATION

Gene ID	7273
Gene Symbol	TTN
Uniprot ID	TITIN_HUMAN
Immunogen	Synthetic peptide from human protein at amino acid range: 161-210
Immunogen Region	161-210
Specificity	TTN polyclonal antibody (Titin) binds to endogenous Titin at the amino acid region 161-210.
Immunogen Sequence	



Immunohistochemical analysis of paraffin-embedded human-skeletal-muscle, antibody was diluted at 1:200

Immunohistochemical analysis of paraffin-embedded human-heart, antibody was diluted at 1:200

Immunohistochemical analysis of paraffin-embedded human-skeletal-muscle, antibody was diluted at 1:200

Immunohistochemical analysis of paraffin-embedded human-heart, antibody was diluted at 1:200

This product is suitable for in-vitro studies under the RESEARCH USE ONLY [RUO] licence. This product must not be used as for diagnostic or other medical purposes.
St John's Laboratory Ltd, Knowledge Dock Business Centre, University Way, London, E16 2RD | Tel: 0208 223 3081