

Anti-INS antibody (30-70) (STJ98980)

STJ98980

GENERAL INFORMATION

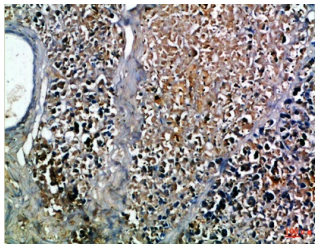
Product Type	Primary antibodies
Short Description	Rabbit polyclonal antibody anti-Insulin Cleaved Into-Insulin B Chain-Insulin A Chain (30-70) is suitable for use in Immunohistochemistry, Immunofluorescence and ELISA research applications.
Applications	IHC-P, IF-P, ELISA
Host/Source	Rabbit
Reactivity	Human, Mouse, Rat

PRODUCT PROPERTIES

Clonality	Polyclonal
Clone ID	
Concentration	1 mg/mL
Conjugation	Unconjugated
Purification	The antibody was affinity-purified from rabbit anti-serum by affinity-chromatography.
Dilution Range	IHC-P 1:50-200 ELISA 1:10000-20000
Formulation	PBS, 50% Glycerol, 0.5% BSA and 0.02% Sodium Azide.
Isotype	IgG
Storage	Store at -20°C for up to 1 year from the date of receipt, and avoid repeat freeze-thaw cycles.
Instruction	

TARGET INFORMATION

Gene ID	3630
Gene Symbol	INS
Uniprot ID	INS_HUMAN
Immunogen	Synthetic peptide from human protein at amino acid range: 30-70
Immunogen Region	30-70
Specificity	INS polyclonal antibody (Insulin Cleaved Into-Insulin B Chain-Insulin A Chain) binds to endogenous Insulin Cleaved Into-Insulin B Chain-Insulin A Chain at the amino acid region 30-70.
Immunogen Sequence	



Immunohistochemical analysis of paraffin-embedded Human-pancreas, antibody was diluted at 1:100

This product is suitable for in-vitro studies under the RESEARCH USE ONLY [RUO] licence. This product must not be used as for diagnostic or other medical purposes.
St John's Laboratory Ltd, Knowledge Dock Business Centre, University Way, London, E16 2RD | Tel: 0208 223 3081