

Anti-RPA2 antibody [3E7-B5-F2] (STJ99210)

STJ99210

GENERAL INFORMATION

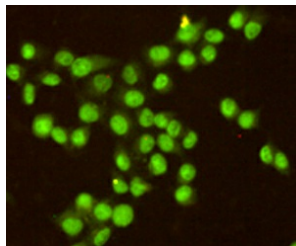
Product Type	Primary antibodies
Short Description	Mouse monoclonal antibody anti-Replication Protein A 32 Kda Subunit is suitable for use in Western Blot, Immunoprecipitation and Immunocytochemistry research applications.
Applications	WB, IP, ICC
Host/Source	Mouse
Reactivity	Human

PRODUCT PROPERTIES

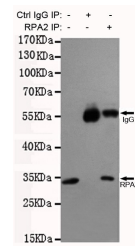
Clonality	Monoclonal
Clone ID	3E7-B5-F2
Concentration	1 mg/mL
Conjugation	Unconjugated
Purification	The antibody was isolated from ascitic fluid by immunoaffinity chromatography using antigens coupled to agarose beads.
Dilution Range	WB 1:2000 ICC 1:200
Formulation	PBS, 50% Glycerol, 0.5% BSA and 0.02% Sodium Azide.
Isotype	IgG2b
Storage	Store at -20°C for up to 1 year from the date of receipt, and avoid repeat freeze-thaw cycles.
Instruction	

TARGET INFORMATION

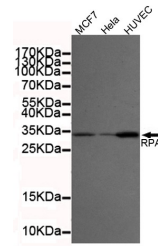
Gene ID	6118
Gene Symbol	RPA2
Uniprot ID	RFA2_HUMAN
Immunogen	Purified recombinant human RPA32/RPA2 protein fragments expressed in E.coli.
Immunogen Region	
Specificity	RPA2 monoclonal antibody (Replication Protein A 32 Kda Subunit) binds to endogenous Replication Protein A 32 Kda Subunit.
Immunogen Sequence	



Immunocytochemistry staining of HeLa cells fixed with 20°C Methanol and using anti-RPA32/RPA2 antibody (dilution 1:200).



Immunoprecipitation analysis of HeLa cell lysates using RPA32/RPA2 mouse mAb.



Western blot detection of RPA32/RPA2 in MCF7, HeLa and HUVEC cell lysates using RPA32/RPA2 mouse mAb (1:2000 diluted). Predicted band size: 32KDa. Observed band size: 32KDa. Exposure time: 20s.

This product is suitable for in-vitro studies under the RESEARCH USE ONLY [RUO] licence. This product must not be used as for diagnostic or other medical purposes.
St John's Laboratory Ltd, Knowledge Dock Business Centre, University Way, London, E16 2RD | Tel: 0208 223 3081