

Anti-MAP2 antibody (N-Term) [1D7-B9-C8-F6] (STJ99309)

STJ99309

GENERAL INFORMATION

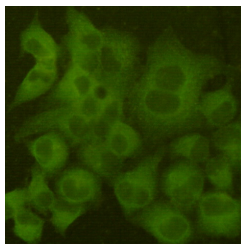
Product Type	Primary antibodies
Short Description	Mouse monoclonal antibody anti-Microtubule-Associated Protein 2 (N-Term) is suitable for use in Western Blot, Immunoprecipitation and Immunocytochemistry research applications.
Applications	WB, IP, ICC
Host/Source	Mouse
Reactivity	Human, Mouse

PRODUCT PROPERTIES

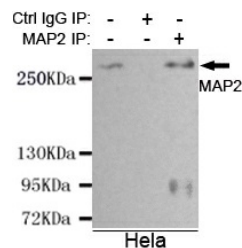
Clonality	Monoclonal
Clone ID	1D7-B9-C8-F6
Concentration	1 mg/mL
Conjugation	Unconjugated
Purification	The antibody was isolated from ascitic fluid by immunoaffinity chromatography using antigens coupled to agarose beads.
Dilution Range	WB 1:1000 ICC 1:150
Formulation	PBS, 50% Glycerol, 0.5% BSA and 0.02% Sodium Azide.
Isotype	IgG2b
Storage	Store at -20°C for up to 1 year from the date of receipt, and avoid repeat freeze-thaw cycles.
Instruction	

TARGET INFORMATION

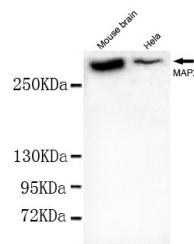
Gene ID	4133
Gene Symbol	MAP2
Uniprot ID	MTAP2_HUMAN
Immunogen	Purified recombinant human MAP2 (N-terminus) protein fragments expressed in E.coli
Immunogen Region	N-Term
Specificity	MAP2 monoclonal antibody (Microtubule-Associated Protein 2) binds to endogenous Microtubule-Associated Protein 2 at the amino acid region N-Term.
Immunogen Sequence	



Immunocytochemistry staining of HeLa cells fixed with 4% Paraformaldehyde and using anti-MAP2 (N-term) mouse mAb (dilution 1:100).



Immunoprecipitation analysis of HeLa cell lysates using MAP2 (N-terminus) mouse mAb.



Western blot detection of MAP2 (N-terminus) in Mouse Brain tissue and HeLa cell lysates using MAP2 (N-terminus) mouse mAb (1:1000 diluted). Predicted band size: 202KDa. Observed band size: 300KDa.