

## Anti-Papillomavirus type 1 E2-protein antibody (182-190aa) [1E2] (STJA0002810)

STJA0002810

### GENERAL INFORMATION

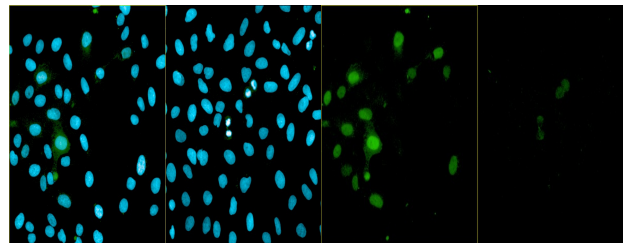
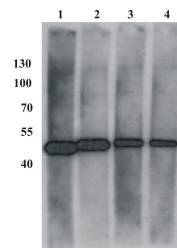
<b>Product Type</b>	Primary antibodies
<b>Short Description</b>	Mouse monoclonal antibody anti-Papillomavirus type 1 E2-protein (182-190aa) is suitable for use in ELISA, Western Blot, Immunofluorescence and Immunoprecipitation research applications.
<b>Applications</b>	ELISA, WB, IF, IP
<b>Host/Source</b>	Mouse
<b>Reactivity</b>	PV

### PRODUCT PROPERTIES

<b>Clonality</b>	Monoclonal
<b>Clone ID</b>	1E2
<b>Concentration</b>	
<b>Conjugation</b>	Unconjugated
<b>Purification</b>	Protein A purification
<b>Dilution Range</b>	ELISA 0.2 to 1 µg/ml; WB 0.5 to 2 µg/ml; IF 0.33 to 1 µg/ml Antibody working titer has to be established practically for each particular antigen and assay format
<b>Formulation</b>	PBS pH 7.4, 50% glycerole
<b>Isotype</b>	IgG
<b>Storage</b>	Store at -20 or -70 °C upon receipt. Divide antibody into aliquots prior usage. Avoid multiple freeze-thaw cycles as product degradation may result
<b>Instruction</b>	

### TARGET INFORMATION

<b>Gene ID</b>	
<b>Gene Symbol</b>	
<b>Uniprot ID</b>	
<b>Immunogen</b>	182-190aa
<b>Immunogen Region</b>	182-190aa
<b>Specificity</b>	
<b>Immunogen Sequence</b>	



This product is suitable for in-vitro studies under the RESEARCH USE ONLY [RUO] licence. This product must not be used as for diagnostic or other medical purposes.  
 St John's Laboratory Ltd, Knowledge Dock Business Centre, University Way, London, E16 2RD | Tel: 0208 223 3081