

Human CCL4 (C-C motif chemokine 4) CLIA Kit (STJC0000022)

STJC0000022

GENERAL INFORMATION

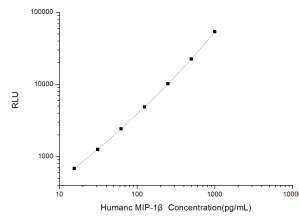
Product Type	Kits
Short Description	This human CCL4 kit is a highly sensitive in-vitro chemiluminescent immunoassay for the measurement of trace amounts of analytes.
Applications	CLIA
Reactivity	Human

PRODUCT PROPERTIES

Detection	Chemiluminescence
Sensitivity	9.38pg/mL
Detection Limit	15.63~1000pg/mL
Assay Time	3.5h
Storage Instruction	If unopened the kit may be stored at 2-8 °C for up to 1 month. If the kit will not be used within 1 month, store the components separately, according to the component table in the manual.
Note	FOR RESEARCH USE ONLY (RUO).

TARGET INFORMATION

Sample Types	Serum, plasma and other biological fluids
Gene Symbol	CCL4
Uniprot ID	CCL4_HUMAN



This product is suitable for in-vitro studies under the RESEARCH USE ONLY [RUO] licence. This product must not be used as for diagnostic or other medical purposes.
St John's Laboratory Ltd, Knowledge Dock Business Centre, University Way, London, E16 2RD | Tel: 0208 223 3081