

Chicken MMP13 (Matrix Metalloproteinase 13) Sandwich ELISA Kit (STJE0010649)

STJE0010649

GENERAL INFORMATION

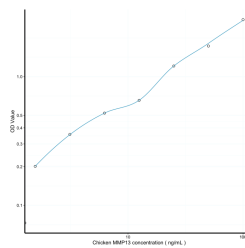
Product Type	Kits
Short Description	This MMP13 Sandwich ELISA Kit is an in-vitro enzyme-linked immunosorbent assay for the measurement of samples in chicken cell culture supernatant, serum and plasma (EDTA, citrate, heparin).
Applications	ELISA
Reactivity	Chicken

PRODUCT PROPERTIES

Detection	1.56-100ng/mL
Sensitivity	0.63ng/mL
Detection Limit	1.56-100ng/mL
Assay Time	4.5 hrs
Storage	Store the unopened kit in the fridge at 2-8°C for up to 6 months. Once opened store individual kit contents according to components table provided with the kit.
Instruction	
Note	FOR RESEARCH USE ONLY (RUO).

TARGET INFORMATION

Sample Types	serum, plasma or other biological fluids.
Gene	
Symbol	
Uniprot ID	



This product is suitable for in-vitro studies under the RESEARCH USE ONLY [RUO] licence. This product must not be used as for diagnostic or other medical purposes.
 St John's Laboratory Ltd, Knowledge Dock Business Centre, University Way, London, E16 2RD | Tel: 0208 223 3081