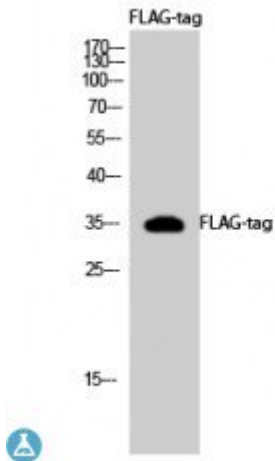


Anti-FLAG-tag antibody (KLH)



Description	Rabbit polyclonal to FLAG-tag.
Model	STJ90108
Host	Rabbit
Applications	ELISA, WB
Immunogen	Synthesized peptide derived from DDDDK synthetic peptide conjugated to KLH.
Dilution range	WB 1:1000-1:3000ELISA 1:20000
Specificity	FLAG-tag Polyclonal Antibody detects FLAG-tagged recombinant proteins or FLAG-tagged proteins overexpressed in cells.
Purification	The antibody was affinity-purified from rabbit antiserum by affinity-chromatography using epitope-specific immunogen.
Note	For Research Use Only (RUO).
Protein Name	FLAG-tag (KLH)
Clonality	Polyclonal
Conjugation	KLH
Isotype	IgG
Formulation	Liquid in PBS containing 50% glycerol, 0.5% BSA and 0.02% sodium azide.
Concentration	1 mg/ml
Storage Instruction	Store at -20°C, and avoid repeat freeze-thaw cycles.
Alternative Names	FLAG-tag (KLH)

St John's Laboratory Ltd

F +44 (0)207 681 2580

T +44 (0)208 223 3081

W <http://www.stjohnslabs.com/>

E info@stjohnslabs.com