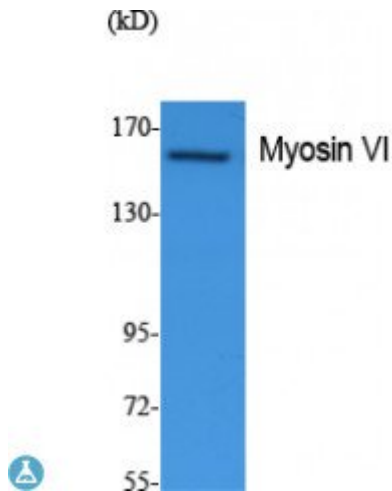


Anti-Myosin VI antibody



Description

Myosin VI is a protein encoded by the MYO6 gene which is approximately 149,6 kDa. Myosin VI is localised to the Golgi apparatus, nucleus and cytoplasm. It is involved in the PAK pathway, gap junction trafficking, actin nucleation and the RhoGDI pathway. It is a reverse-direction motor protein with ATPase activity that moves toward the minus end of actin filaments and plays a role in intracellular vesicle and organelle transport. Myosin VI is expressed in most tissues including heart, brain, placenta, pancreas and spleen. Mutations in the MYO6 gene may result in deafness. STJ96437 was affinity-purified from rabbit antiserum by affinity-chromatography using epitope-specific immunogen. This polyclonal antibody detects endogenous levels of Myosin VI protein.

Model	STJ96437
Host	Rabbit
Reactivity	Human, Mouse, Rat
Applications	ELISA, IF, IHC, WB
Immunogen	Synthesized peptide derived from human Myosin VI
Immunogen Region	40-120 aa, N-terminal
Gene ID	4646
Gene Symbol	MYO6
Dilution range	WB 1:500-1:2000IHC-P 1:100-300ELISA 1:5000
Specificity	Myosin VI Polyclonal Antibody detects endogenous levels of Myosin VI protein.
Purification	The antibody was affinity-purified from rabbit antiserum by affinity-

chromatography using epitope-specific immunogen.

Note	For Research Use Only (RUO).
Protein Name	Unconventional myosin-VI Unconventional myosin-6
Molecular Weight	150 kDa
Clonality	Polyclonal
Conjugation	Unconjugated
Isotype	IgG
Formulation	Liquid in PBS containing 50% glycerol, 0.5% BSA and 0.02% sodium azide.
Concentration	1 mg/ml
Storage Instruction	Store at -20°C, and avoid repeat freeze-thaw cycles.
Database Links	HGNC:76050MIM:600970
Alternative Names	Unconventional myosin-VI Unconventional myosin-6

St John's Laboratory Ltd

F +44 (0)207 681 2580

T +44 (0)208 223 3081

W <http://www.stjohnslabs.com/>

E info@stjohnslabs.com