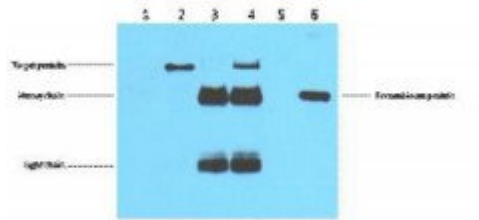


Anti-Flag-Tag antibody



Description	Mouse monoclonal to Flag-Tag.
Model	STJ96903
Host	Mouse
Applications	IF, IP, WB
Immunogen	Synthetic Peptide
Dilution range	WB 1:5000IP 1:200IF 1:2000
Specificity	The antibody detects C-terminal, internal, and N-terminal Flag-tag fusion proteins.
Purification	The antibody was affinity-purified from mouse ascites by affinity-chromatography using specific immunogen.
Clone ID	2C5
Note	For Research Use Only (RUO).
Protein Name	Flag-Tag
Clonality	Monoclonal
Conjugation	Unconjugated
Isotype	IgGMale
Formulation	Liquid in PBS containing 50% glycerol, 0.5% BSA and 0.02% sodium azide.
Storage Instruction	Store at -20°C, and avoid repeat freeze-thaw cycles.
Alternative Names	Flag-Tag

St John's Laboratory Ltd

F +44 (0)207 681 2580

T +44 (0)208 223 3081

W <http://www.stjohnslabs.com/>

E info@stjohnslabs.com