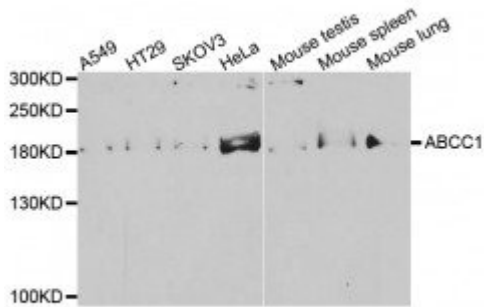


Anti-ABCC1 antibody



Description

The protein encoded by this gene is a member of the superfamily of ATP-binding cassette (ABC) transporters. ABC proteins transport various molecules across extra- and intra-cellular membranes. ABC genes are divided into seven distinct subfamilies (ABC1, MDR/TAP, MRP, ALD, OABP, GCN20, White). This full transporter is a member of the MRP subfamily which is involved in multi-drug resistance. This protein functions as a multispecific organic anion transporter, with oxidized glutathione, cysteinyl leukotrienes, and activated aflatoxin B1 as substrates. This protein also transports glucuronides and sulfate conjugates of steroid hormones and bile salts. Alternatively spliced variants of this gene have been described but their full-length nature is unknown.

Model	STJ22459
Host	Rabbit
Reactivity	Human, Mouse
Applications	IHC, WB
Immunogen	A synthetic peptide of human ABCC1
Gene ID	4363
Gene Symbol	ABCC1
Dilution range	WB 1:500 - 1:1000 IHC 1:50 - 1:200
Tissue Specificity	Lung, testis and peripheral blood mononuclear cells.
Purification	Affinity purification
Note	For Research Use Only (RUO).

Protein Name	Multidrug Resistance-Associated Protein 1 Atp-Binding Cassette Sub-Family C Member 1 Glutathione-S-Conjugate-Translocating Atpase Abcc1 Leukotriene C(4) Transporter Ltc4 Transporter
Molecular Weight	Calculated: 151-172kDa. Observed: 172kDa
Clonality	Polyclonal
Conjugation	Unconjugated
Isotype	IgG
Formulation	PBS with 0.02% sodium azide, 50% glycerol, pH7.3.
Storage Instruction	Store at -20°C. Avoid freeze / thaw cycles.
Alternative Names	Anti-Multidrug Resistance-Associated Protein 1 antibody Anti-Atp-Binding Cassette Sub-Family C Member 1 antibody Anti-Glutathione-S-Conjugate-Translocating Atpase Abcc1 antibody Anti-Leukotriene C(4) Transporter antibody Anti-Ltc4 Transporter antibody Anti-ABCC1 MRP MRP1 antibody
Function	Mediates export of organic anions and drugs from the cytoplasm. Mediates ATP-dependent transport of glutathione and glutathione conjugates, leukotriene C4, estradiol-17-beta-o-glucuronide, methotrexate, antiviral drugs and other xenobiotics. Confers resistance to anticancer drugs by decreasing accumulation of drug in cells, and by mediating ATP- and GSH-dependent drug export. Hydrolyzes ATP with low efficiency. Catalyzes the export of sphingosine 1-phosphate from mast cells independently of their degranulation. Participates in inflammatory response by allowing export of leukotriene C4 from leukotriene C4-synthesizing cells.
Cellular Localization	Cell Membrane Multi-Pass Membrane Protein

St John's Laboratory Ltd

F +44 (0)207 681 2580

T +44 (0)208 223 3081

W <http://www.stjohnslabs.com/>

E info@stjohnslabs.com