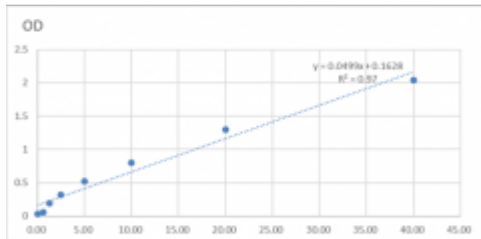




Rat Synaptophysin ELISA kit



Description

The kit is a sandwich enzyme immunoassay for in vitro quantitative measurement of SYP in Rat serum, plasma and other biological fluids.

Model	STJ150396
Reactivity	Rat
Applications	ELISA
Gene ID	24804
Gene Symbol	Syp
Dilution range	0.625--40ng/mL
Tissue Specificity	Serum, Plasma, Biological Fluids
Note	FOR RESEARCH USE ONLY (RUO) .
Protein Name	SYP
Molecular Weight	33.8 kDa
Storage Instruction	Store at 4°C for 6 months.
Database Links	HGNC:11506 OMIM:300802
Alternative Names	Synaptophysin, Major Synaptic Vesicle Protein P38
Function	Possibly involved in structural functions as organizing other membrane components or in targeting the vesicles to the plasma membrane. Involved in the regulation of short-term and long-term synaptic plasticity.
Cellular Localization	Cytoplasmic Vesicle, Secretory Vesicle, Synaptic Vesicle Membrane, Multi-Pass Membrane Protein, Cell Junction, Synapse, Synaptosome
Post-translational	Ubiquitinated; mediated by SIAH1 or SIAH2 and leading to its subsequent

Modifications

proteasomal degradation.

St John's Laboratory Ltd

F +44 (0)207 681 2580

T +44 (0)208 223 3081

W <http://www.stjohnslabs.com/>

E info@stjohnslabs.com